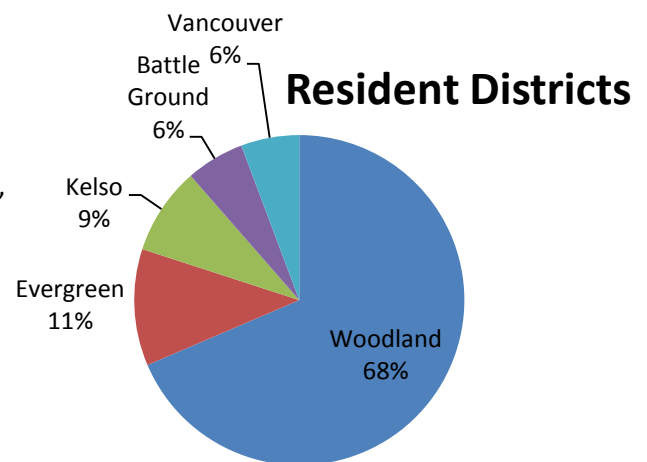
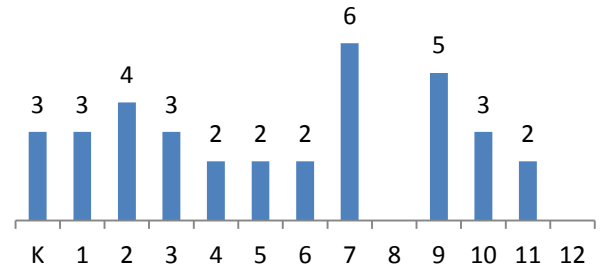


Lewis River Academy | Board Update – January 9, 2012

- Accreditation
 - Northwest Accreditation Commission
- Enrollment = 35 students
 - High School = 10
 - K-8 = 25
 - Out of District Students = 11
- Co-enrollment
 - WHS: Special Education
 - WMS: Special Education, PE, Art, and Technology
 - Yale: PE
- Parent Partnership Forums
 - 1st Monday of each month. We meet with parents to discuss successes and ways to improve the Academy.
 - JOEYS – unofficial parent group run by parents. Special events with LRA students, students from other online schools, and homeschool students.
- Open Computer/Instructional Labs
 - Monday and Wednesday at Yale
 - Tuesday and Thursday at Woodland
 - Proctored tests and instruction
- One-on-One Tutoring (upon request)
- High School Science Labs (upon request)
- K-8 Science Labs
 - 1st and 3rd Wednesday of each month
- Field Trips
 - Physical
 - Fort Vancouver
 - Vancouver Public Library
 - Virtual
 - Jason Project
NASA Engineer for Mars Rover
 - Saguaro National Park
Desert Diversity
 - Planned
 - OMSI – Oregon Museum of Science and Industry - Body Worlds & the Brain

Grade Levels



Link to Prezi Presentation: http://prezi.com/6jwcebdhbhup/lewis-river-academy/?auth_key=f9cf743e5664e65194733b5a4f14edb65bf2946c